



# NEVA **DISPLAY**

*Your Professional Solution Partner*

**PRODUCT CATALOG**

# PLEXIGLASS PRODUCTS

## Label Holders & Brochure Holders



## Signboards & Box Letters



# DISPLAY STANDS

## Plexiglass Products



## Wooden Products



# DISPLAY PRODUCTS

## Roll-Up Banner



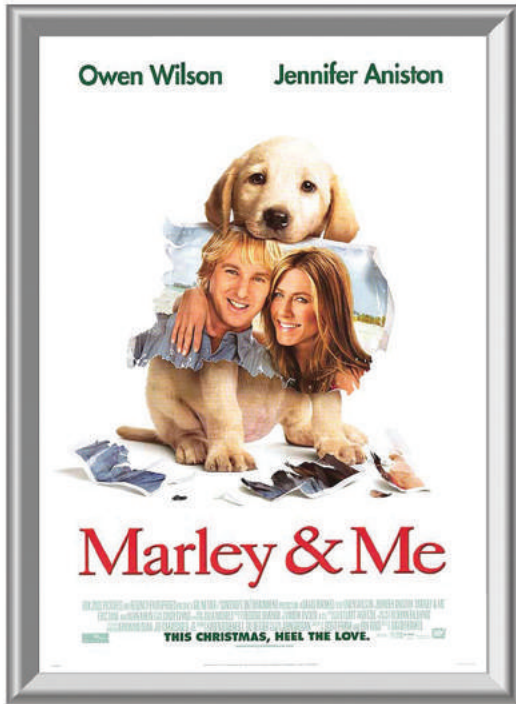
## Pop-Up Stand



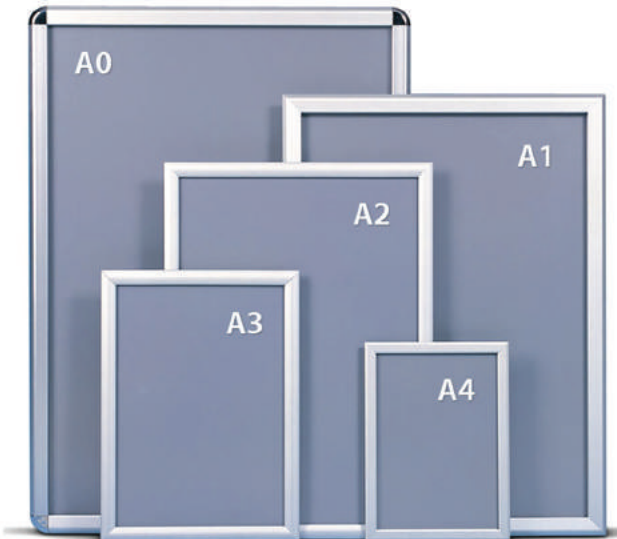
 **NEVA DISPLAY**

# DISPLAY PRODUCTS

## Led Light Box

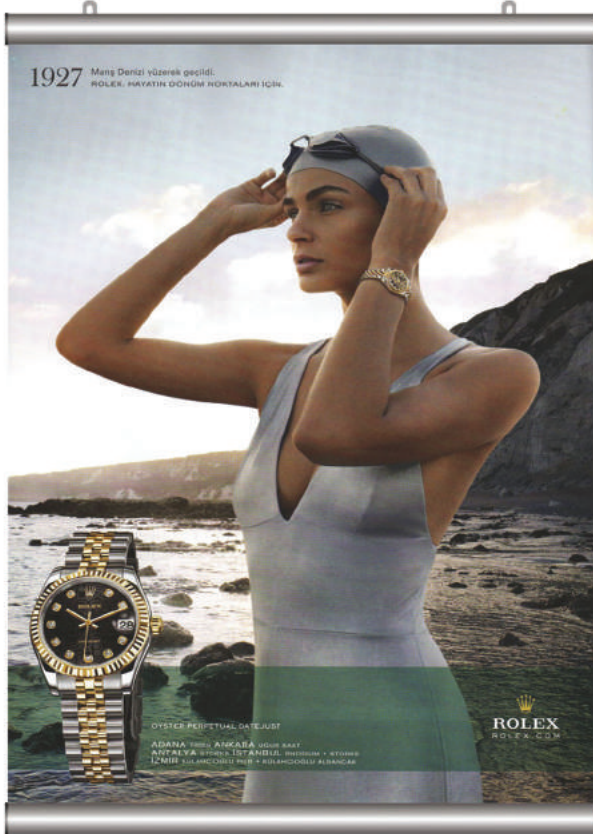


## Snap Frame



# DISPLAY PRODUCTS

## Poster Holder



## Info Topper



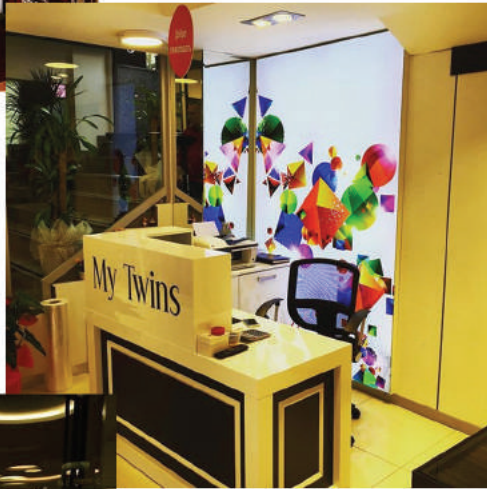
## Pavement Sign



## X Banner & L Banner



# TEXTILE FRAMES



# APPLICATIONS

## Vehicle Covering



## Outdoor Applications



## Indoor Applications





# LIGHTING SOLUTIONS

## MODULE LED

2835 CHIP PLUS LENS MODULE LED 1,5 WT 160° LENS ANGLE

COLOUR OPTIONS



79X15



2835 CHIP ECO LENS MODULE LED 0,72 WT 140° LENS ANGLE

COLOUR OPTIONS



66X12



5630 CHIP 3 LENS SQUARE MODULE LED 1,44 WT

COLOUR OPTIONS

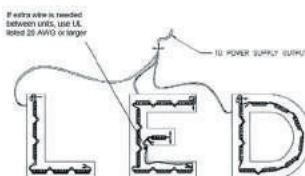


40x40



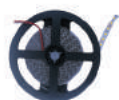
2835 CHIP SAMSUNG MODULE LED 1,5 WT 160° LENS ANGLE

70X13



## LED STRIP

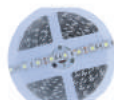
2835 CHIP LED STRIP



COLOUR OPTIONS



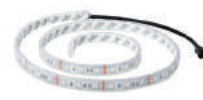
5050 CHIP LED STRIP



COLOUR OPTIONS



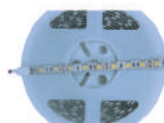
5050 RGB LED STRIP



COLOUR OPTIONS



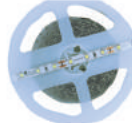
5050 IP65 PROTECK FOR OUTDOOR



COLOUR OPTIONS



2835 NANO LED STRIP



COLOUR OPTIONS



3014 LED STRIP



COLOUR OPTIONS



## POWER SUPPLY

FOR INDOOR AND OUTDOOR IP20 - IP67

| INPUT VOLTAGE | FREQUENCY HZ | POWER WATT | DC OUTPUT (VDC) | OUTPUT CURRENT (ADC) | SIZE            |
|---------------|--------------|------------|-----------------|----------------------|-----------------|
| 100-240 VAC   | 47-63 HZ     | 15 W       | 5V - 12V - 24V  | 1 A                  | 120 X 24,5 X 20 |
| 100-240 VAC   | 47-63 HZ     | 24 W       | 5V - 12V - 24V  | 2 A                  | 118 X 35 X 26   |
| 100-240 VAC   | 47-63 HZ     | 36 W       | 5V - 12V - 24V  | 3 A                  | 148 X 40 X 30   |
| 100-240 VAC   | 47-63 HZ     | 60 W       | 5V - 12V - 24V  | 5 A                  | 162 X 42 X 30   |
| 100-240 VAC   | 47-63 HZ     | 100 W      | 5V - 12V - 24V  | 8,5 A                | 200 X 72 X 35   |
| 100-240 VAC   | 47-63 HZ     | 150 W      | 5V - 12V - 24V  | 12,5 A               | 222 X 68 X 40   |
| 100-240 VAC   | 47-63 HZ     | 200 W      | 5V - 12V - 24V  | 16,5 A               | 290 X 70 X 45   |
| 100-240 VAC   | 47-63 HZ     | 240 W      | 5V - 12V - 24V  | 20 A                 | 300 X 120 X 58  |
| 100-240 VAC   | 47-63 HZ     | 300 W      | 5V - 12V - 24V  | 25 A                 | 300 X 120 X 58  |
| 100-240 VAC   | 47-63 HZ     | 360 W      | 5V - 12V - 24V  | 30 A                 | 305 X 122 X 58  |
| 100-240 VAC   | 47-63 HZ     | 480 W      | 5V - 12V - 24V  | 40 A                 | 308 X 125 X 58  |





# NEVA

**DISPLAY / PRINT / DESIGN**

**Head Office** : Sanayi Mah. Vehbi Bey Sok. Şeref İş Hanı No:5  
Güngören / İstanbul / **TURKEY**

**Office Phone** : +90 212 505 88 18

**E-mail** : [info@nevadisplay.com](mailto:info@nevadisplay.com)  
[export@nevadisplay.com](mailto:export@nevadisplay.com)

**Mobile Phone**: +90 553 075 6382  
+90 553 076 6382

[www.nevadisplay.com](http://www.nevadisplay.com)

